

Season 807 The World at War – the 1940's

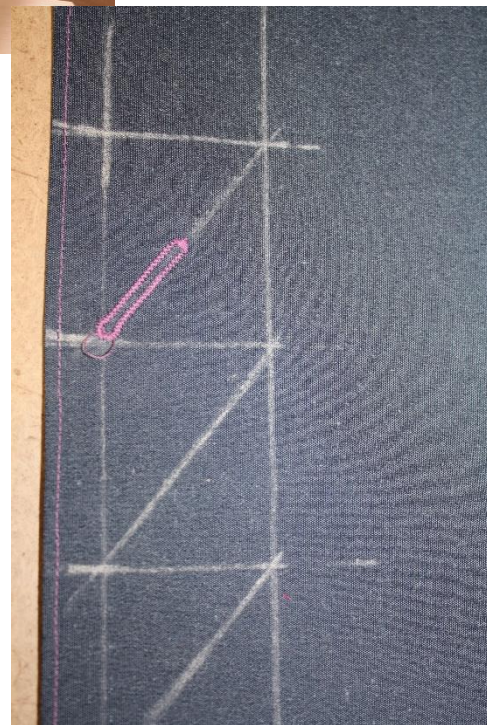
- The Ike Jacket

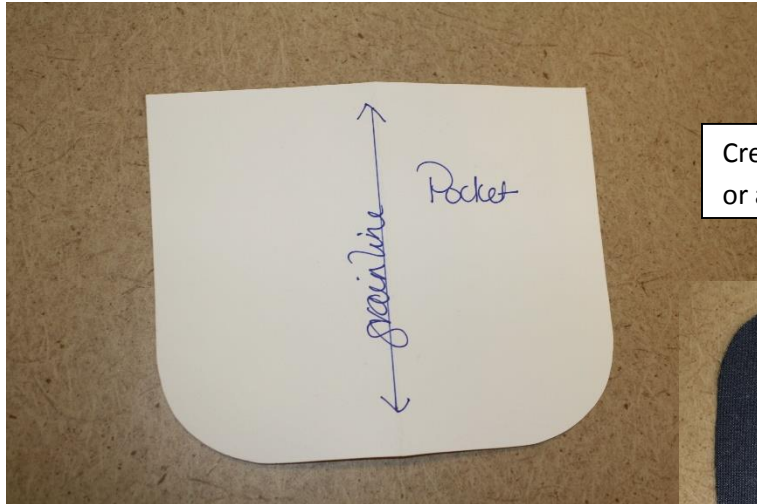
Fabric: All the fabrics I use on **It's Sew Easy TV** come from [Vogue Fabrics](#)

Patterns and Sewing Supplies: [The Angela Wolf Pattern Collection](#)



This jacket focuses on diagonal button holes. It is important to mark each buttonhole evenly apart. Do this with chalk and a quilter's ruler.





Create custom pockets with silk lining or a tab for the shoulder.



Use coupon code **ITSEWEASY10** for 10% off everything at www.AngelaWolfPatterns.com

Refer to my [blog](#) for more sewing tip and tricks!

Angela

Cheers,

Join me ...

