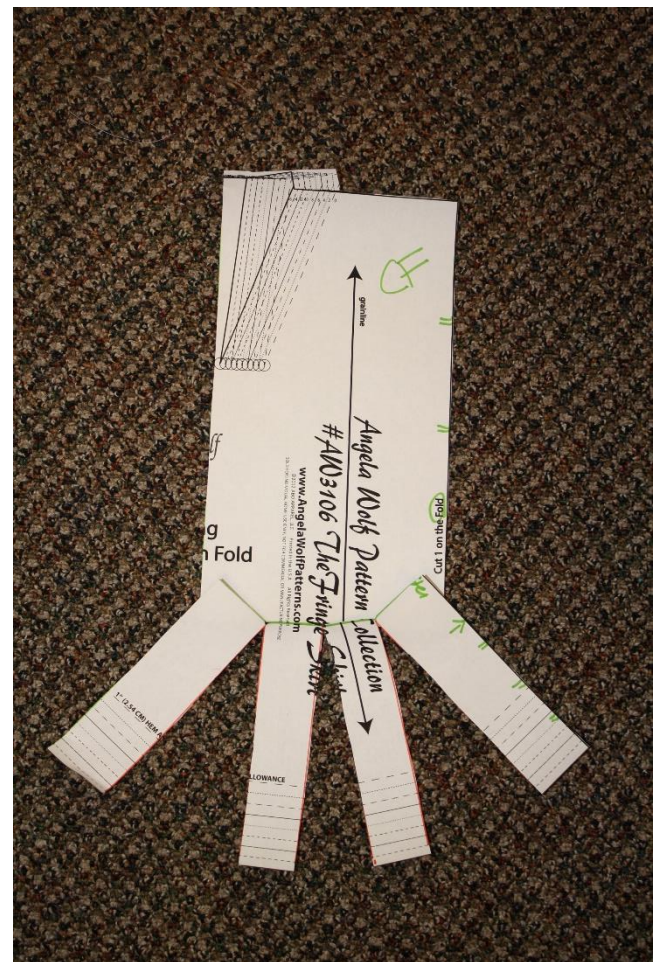
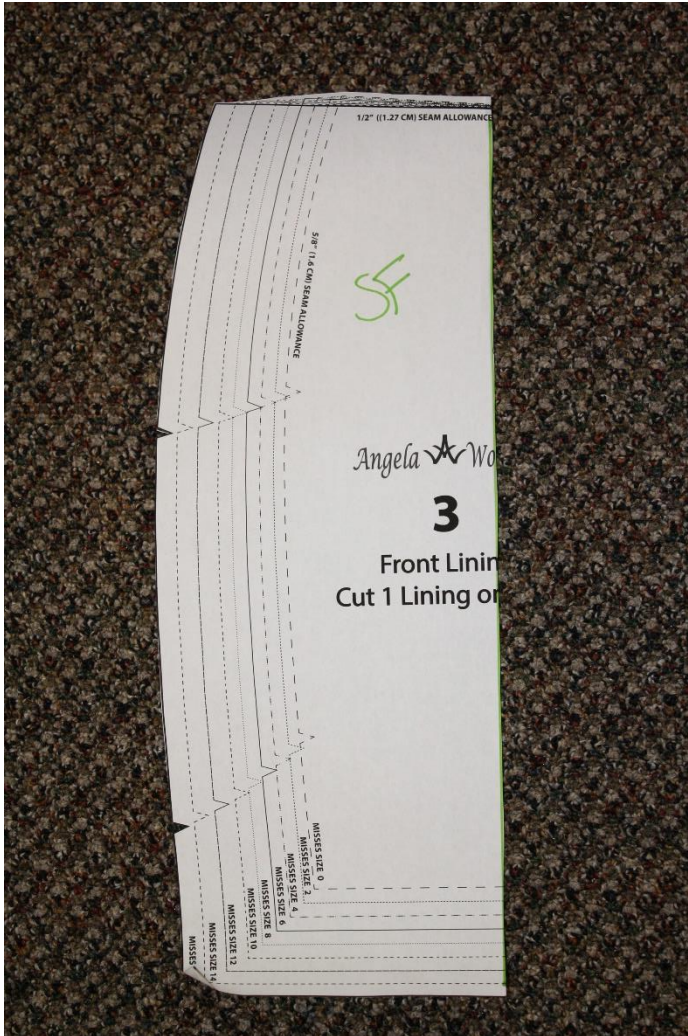


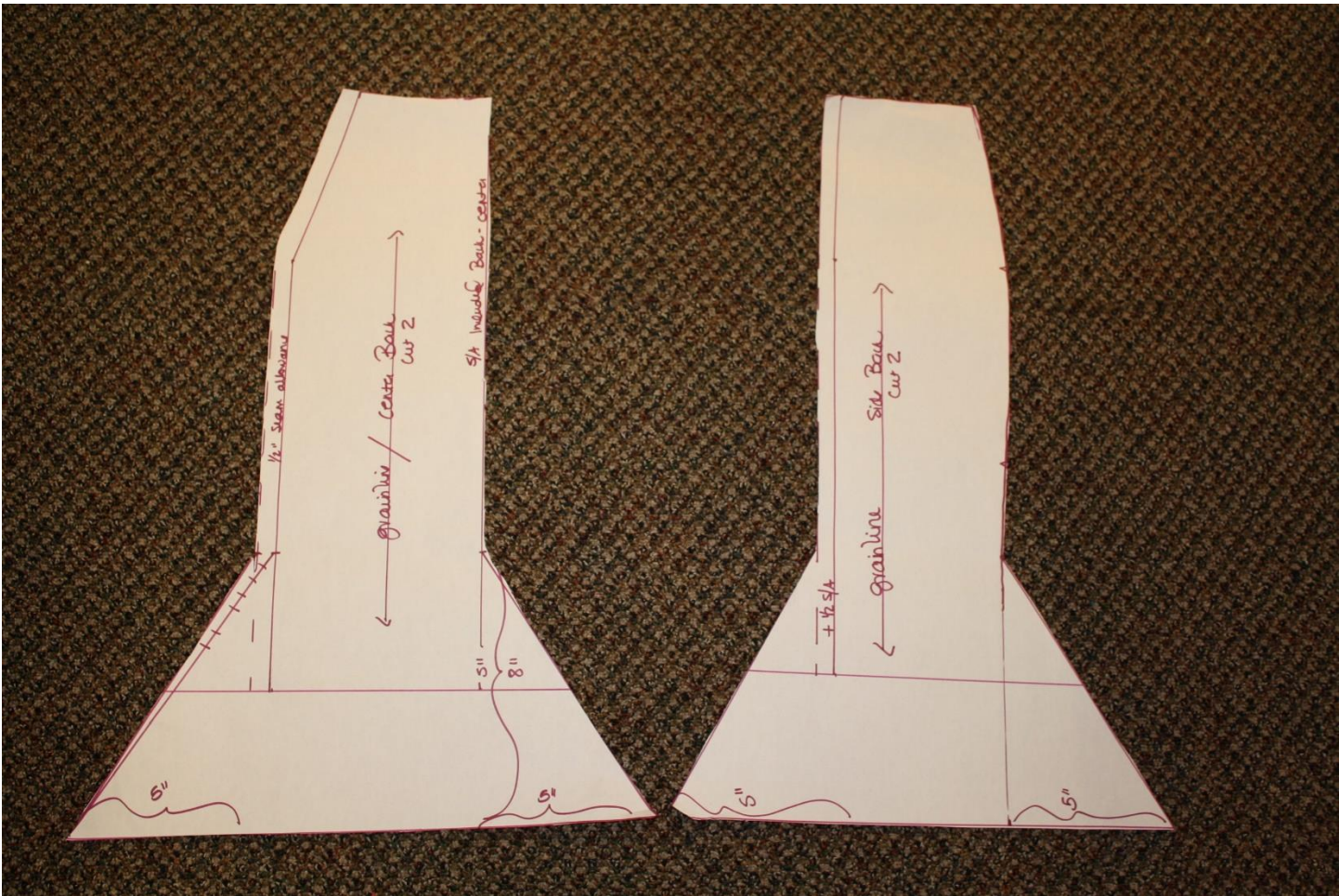
Season 805 The Golden Era – the Late 1920's

- Gored Skirt with faux suede piping

Fabric: All the fabrics I use on *It's Sew Easy TV* come from [Vogue Fabrics](#)
Patterns and Sewing Supplies: [The Angela Wolf Pattern Collection](#)



Designing a gored skirt is very simple. Start with a base skirt pattern and mark the area where you want the skirt to flair out. Then draw line perpendicular to the hemline, up to but not through the cross line. Spread out the bottom of the pattern as shown.



Redraw the pattern as shown. You can also angle the bottom of the hemline for a different look.



Add piping to the seam for added design:

- Cut a strip of contrasting fabric 1 ½" wide – cut on the bias.
- Insert a narrow piece of cording if you want the seam to be raised (note: I did not do that for the skirt shown on the right)
- From the right side of the fabric, attach piping to one seam on each skirt pattern piece.
- Sew each seam together, stitching past the stitch line on the piping.



Use coupon code **ITSEWEASY10** for 10% off everything at www.AngelaWolfPatterns.com

Refer to my [blog](#) for more sewing tip and tricks!

Angela

Cheers,

Join me ... 

