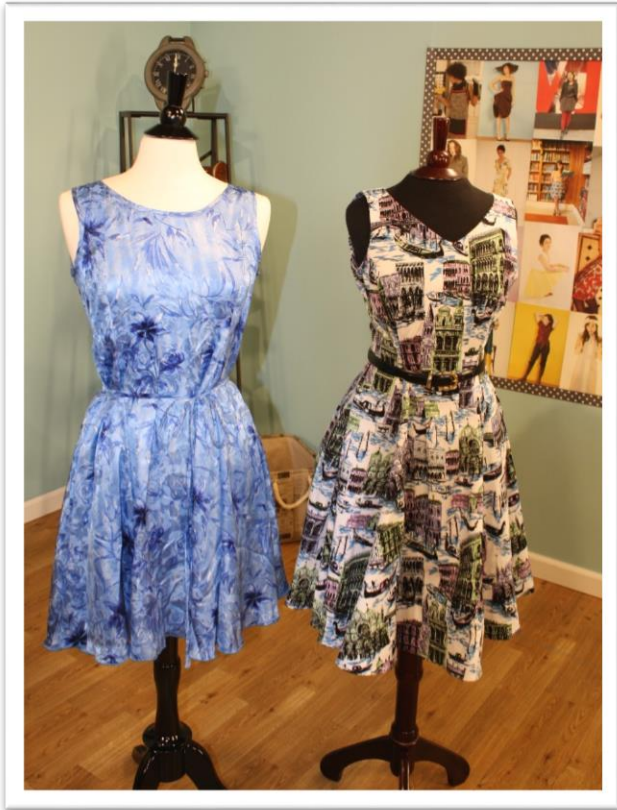


Season 600 - The Little Black Dress

- Attaching Facing and Under Stitch

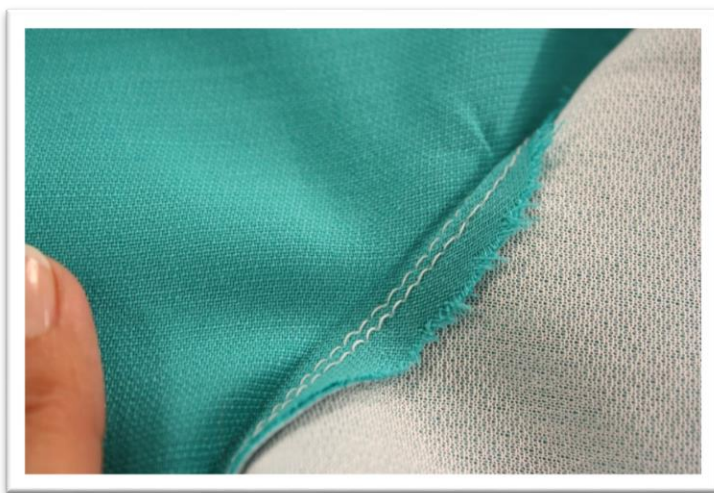
Fabric: All the fabrics I use on **It's Sew Easy TV** come from [Vogue Fabrics](#)
Patterns and Sewing Supplies: [The Angela Wolf Pattern Collection](#)



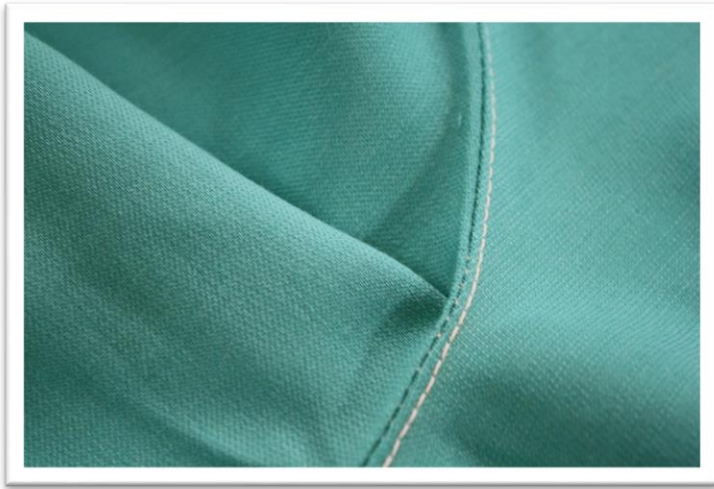
Now it is time to finish the neckline if the dress has a facing.

Facing is usually cut with the same fashion fabric and attached at the neckline and armholes (if the dress is a tank).

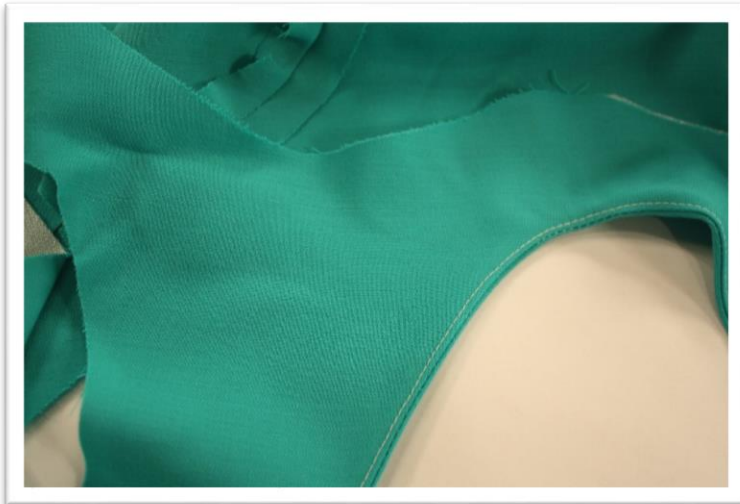
The most important part of attaching the facing is to make sure the facing fabric lies flat against the dress fabric.



- Start by attaching a lightweight fusible interfacing to the facing.



- Attach facing to neckline seam first.
- Understitch along the facing neckline seam.
- Press



- Attach facing at each armhole.
- Understitch along the underarm area on the facing.
- Press.



Refer to my [blog](#) for more sewing tip and tricks!

Cheers,

Angela

Use coupon code **ITSSEWEASY10** for 10% off everything at www.AngelaWolfPatterns.com

Join me ...       