

Season 600 - The Little Black Dress

- Silhouettes & Sewing Darts

Fabric: All the fabrics I use on *It's Sew Easy TV* come from [Vogue Fabrics](#)
Patterns and Sewing Supplies: [The Angela Wolf Pattern Collection](#)

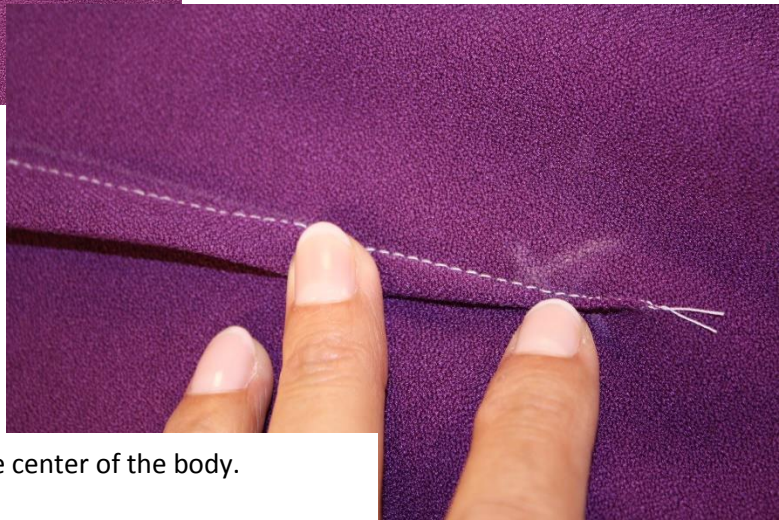


- When sewing darts – mark the dart placement on the wrong side of the fabric. Use an “x” to mark each dart tip.

Join me ...       



- Sew each dart with a slight curve to resemble the body shape.



- Press the darts toward the center of the body.
- Pressing is the most important part of sewing a professional looking garment.
- Use a tailor's clapper and pressing ham when pressing darts.



[Tailor's Clapper](#)



[Pressing Ham](#)

Use coupon code **ITSEWEASY10** for 10% off everything at
www.AngelaWolfPatterns.com

Join me ...       