

211-3

Jessica Johnson demonstrates how to make a colorful and functional fold up dog bowl.



Please continue to page 2 for project instructions.

Partners

brother
at your side



<http://www.brothersews.com>

<http://www.nationalsewingcouncil.org>

Snap & Go™ Pet Dish

A learn-to-sew project
National Sewing Council™



by Jessica Johnson

With support from:

- Islander Sewing Systems™
- Snap Source™



American Sewing Expo™
Every September in Novi, MI





This is a National Sewing Council learn-to-sew project. To learn more about sewing and to find retailers, teachers, classes, sewing expos and more, visit us on the internet.
NationalSewingCouncil.org

Snap & Go™ Pet Dish

*Design by Jessica Johnson
Islander Sewing Systems™*

Prepare pattern piece from the last page.

Materials needed:

1/4 yard of outdoor fabric
1/4 yard of PUL (or other polyurethane laminated fabric)
1 1/8 yard of 1" webbing
3/4 yard of 1/2" boning
Scrap piece of lightweight cotton measuring 1 1/2" x 23 3/4"

Step 1: Cut out pieces.

Outdoor fabric:

1 piece measuring 23 3/4" x 4"
1 square piece measuring 6 1/4" x 6 1/4"

Boning:

4 pieces measuring 2 1/4"
2 pieces measuring 5 1/4"

Webbing: 1 piece measuring 10 1/4"
1 piece measuring 4"
1 piece measuring 24 1/2"

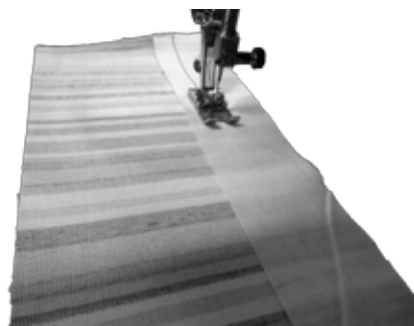
PUL: Octagon pattern piece

Cotton:

1 piece measuring 1 1/2" x 23 3/4"

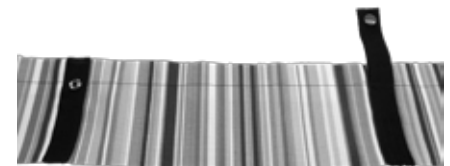
Step 2: Place two shorter pieces of webbing centered at 3 1/4" and 14 1/2" on your rectangle piece of outdoor fabric. Sew the 4" piece completely on by stitching close to both long edges.

Sew 10 1/4" piece on leaving a 3/4" from the top of fabric and fold webbing over to make a loop. Stitch close to both long edges and across at 3/4" from the top to secure loop.



Step 3: Position cotton piece along top of rectangle outdoor fabric on wrong side of fabric and sew on with 1" seam allowance.

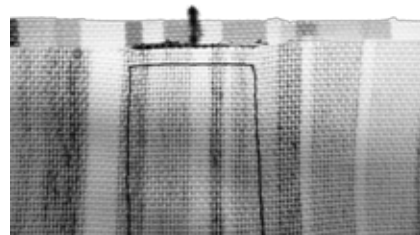
Step 4: Using SnapSetter Tool, attach snap face at 1/2" from top of loop and snap at 1" on sewn-on webbing.



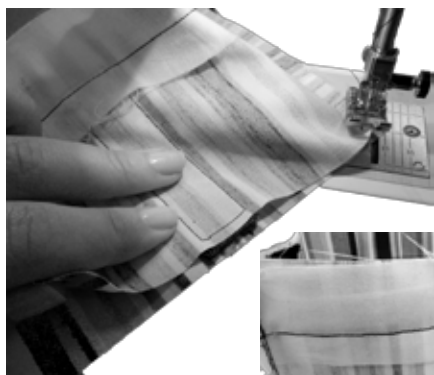
Step 5: With right sides together, sew short ends of rectangle together at 3/8" seam allowance. This will become the sides of your bowl.

Step 6: Mark the center on 2 opposite sides of square piece of outdoor fabric (bottom of bowl).

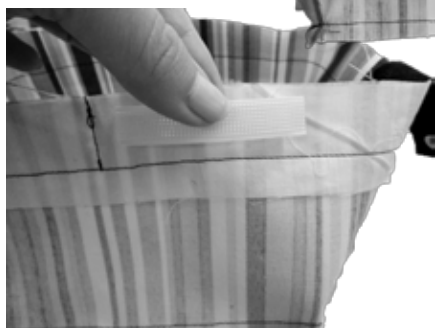
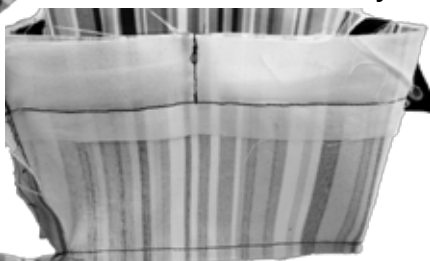
Step 7: Sew bottom of bowl to sides of bowl with right sides together at 1/4", matching center mark on bottom with center of webbing on sides.



Step 8: Find center of bowl sides at the top that don't have webbing and sew 1" seam to separate cotton casing into two sections on each side.



Step 9: Insert boning on all 4 sides where they fit according to size (i.e. long pieces fit on sides of bowl with webbing).



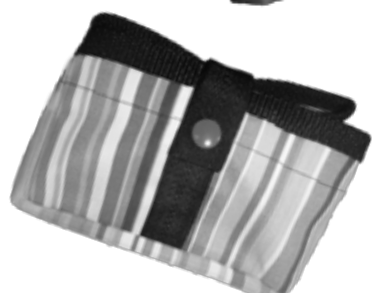
Step 10: Set bowl on top of PUL fabric with wrong sides together. Bring PUL up to match sides with bowl, pleat, and pin at all four corners.



Step 11: Sew PUL to the top edge of the bowl at 1/4" seam allowance.



Step 12: Fold 24 1/2" piece of webbing lengthwise over the top edge of the bowl and sew on as close to the edge of webbing as possible, making sure to catch webbing edges on the inside and out.

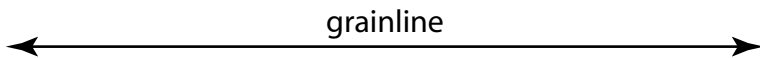


Now you and your pet are ready to travel!

Snap & Go™ Pet Dish



Pattern Piece #1



Place this corner
on center fold point

1. Starting with a piece of pattern paper at least 13" square, fold it in half twice as per the diagrams at the bottom of the page.

2. Place the Pattern Piece #1 onto the folded paper, aligning it with the folded center.

3. Carefully cut the folded paper to match the pattern piece.

4. Unfold the paper and use this full size pattern to cut your fabric.

