

206-2

Tricia Waddell makes a simple cat mat.



Patchwork Cat Mat

Adapted from design by Ayumi Takahashi for Stitch magazine

Make a fun mat for your cat's water and food bowl that is water-resistant and non-slip.

Fabric

- Assorted cotton fabric scraps each at least 6" x 10" (see Notes)
- 1/4 yd of 45" wide solid cotton fabric for face and tail (fabric A)
- 1/8" yd 45" wide solid cotton fabric for iris, mouth, and tail appliqué
- Solid cotton fabric scrap, at least 2" x 2" for pupil
- 1 yd of nonslip fabric (such as rug backing found in the home décor fabric section)

Supplies

- 2 yd of 17" wide iron-on vinyl (such as Heat 'n Bond Vinyl)
- 1/8 yd of fusible web
- Matching and contrasting sewing thread
- Double-sided tape
- Cat Mat template

Finished Size

14" long x 24 1/2" wide

Notes

- All seam allowances are 1/4" unless otherwise noted.
- Use at least 3 different fabrics for the patchwork in the body of the mat so you can alternate the prints. Decide on the arrangement of prints in advance of cutting out the patches.

Instructions

1. Cut the following pieces as directed:

From the assorted print cotton fabric scraps, cut:

- One 4" x 6"
- Two 4" x 8"
- One 4" x 4"
- One 4" x 10"
- One 4" x 6"
- One 3" x 3"
- One 3" x 5"

From fabric A, cut:

- One 6" x 14" piece for the fish face
- One 6" x 7" piece for the fish tail

From the nonslip fabric, cut:

- One 28" x 16" rectangle for the backing

2. Arrange the cotton print rectangles as shown on the template. Beginning with the column of rectangles on the left, sew the pieces into vertical strips. Press the seam allowances open.
3. Sew the vertical columns together, with the seam allowances pressed in opposite directions to reduce bulk.
4. Sew the face fabric to the left edge of the patchwork panel. Sew the tail fabric to the right edge of the patchwork. Press both seams away from the patchwork.
5. Using the provided template, trace or draw two circles onto the paper side of the fusible web for the iris and pupil of the fish's eye. Roughly cut out the circles, leaving a small margin around each. Following the manufacturer's instructions, fuse the circles to the wrong sides of the iris and pupil fabrics (fabric B and C). Fuse the iris to the fish's face. Center the pupil on the iris and fuse.
6. Cut out the curved strip for the mouth, back it with fusible web, and fuse in place on the fish's face.
7. Trace the tail stripes onto fusible web as in Step 5, attach the web to the remaining fabric B. Cut out the appliqués, position them as desired, and fuse in place.
8. Following the manufacturer's instructions, iron the vinyl onto the right and wrong sides of the assembled fish fabric.
9. Using the template, cut the fish shape from the laminated patchwork fish.
10. Lay the patchwork fish on the nonslip fabric with wrong sides together. Use double-sided tape between the layers to prevent shifting. Place the tape away from the fish edges so it will not be sewn through.
11. Set the machine for a zigzag stitch 3.0 mm wide and 1.4 mm long and edgestitch the fish shape to the backing.
12. Trim the excess nonslip fabric just outside the stitches.

Partners



<http://www.brothersews.com>

<http://www.quiltingdaily.com/blogs/stitch/home.aspx>

1a

stitch

PATCHWORK CAT MAT

template

NOTES When preparing to print templates, make sure that you are printing it at 100% and that there is no scaling. Check the settings for page scaling (should be "None") and check the preview to make sure that you will be printing at full size. Make sure that the box labeled "Auto-Rotate and Center" is unchecked (instructions apply specifically to Adobe Reader; if using another pdf reader, check for similar settings). To ensure that the template has printed at the correct scale, check the size of the TEST SQUARE. The Test Square should be 1 × 1" (2.5 × 2.5 cm).

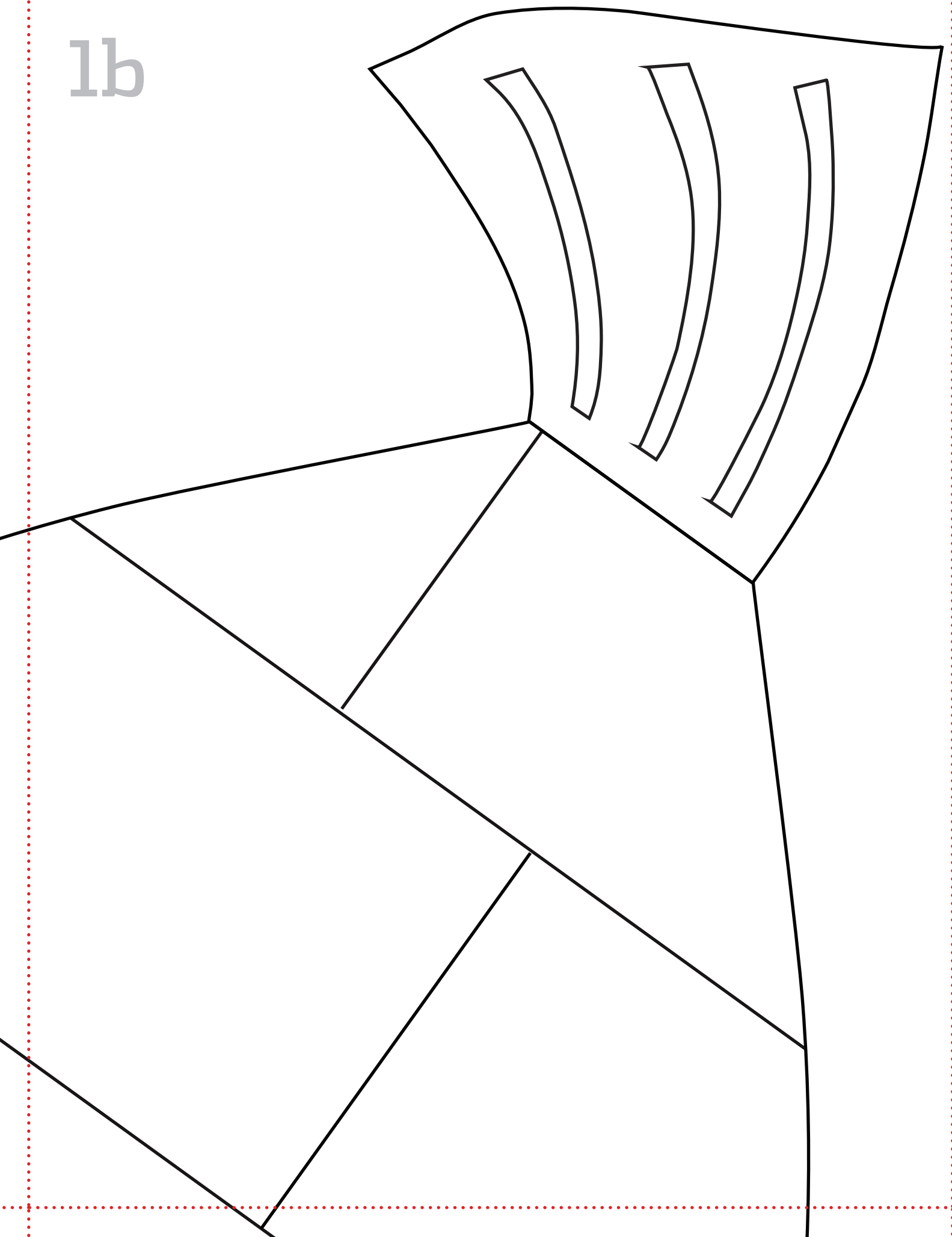
TEST SQUARE

1 × 1"
[2.5 × 2.5 cm]

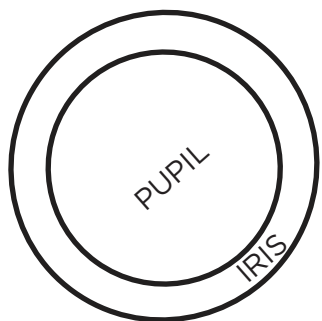
**PATCHWORK
CAT MAT**
FISH TEMPLATE



1b



2a



2b

