



AN EXCERPT FROM

Night and Day Dress

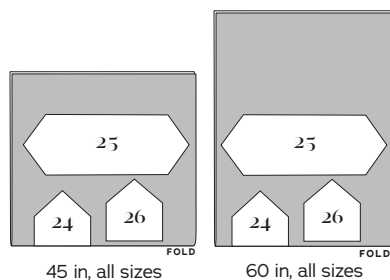
SAILOR COLLAR INSTRUCTIONS

REQUIRED YARDAGE & CUTTING

Square Collar, Fabric and Interfacing (24, 25, 26)

Sizes 2-8 Sizes 10-16

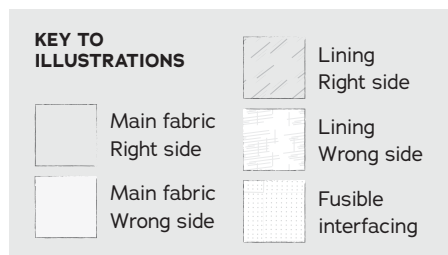
45 in	¾ yd 0.69 m	¾ yd 0.69 m
60 in	⅝ yd 0.57 m	¾ yd 0.69 m



BEFORE SEWING

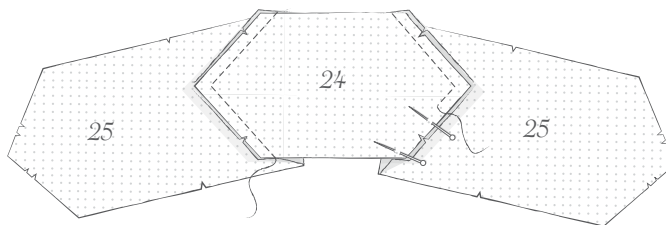
Transfer marks: Use dress-maker's tracing paper and a tracing wheel to copy darts and other pattern marks to the wrong side (WS) of your fabric. Mark the pattern notches by making a snip into the point of the notch with the tip of your scissors.

Interface: Many pattern pieces need to be stabilized with fusible interfacing before sewing. Follow the interfacing cutting instructions on the pattern pieces. Apply fusible interfacing to the WS of the fabric, using a press cloth and steam. Do not move your iron back and forth; lift it up and press down for several seconds at a time until the interfacing is fully adhered.

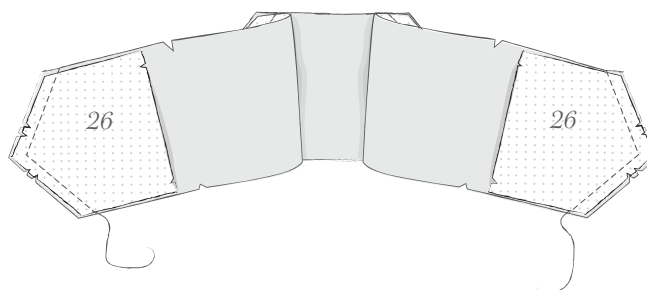


SQUARE COLLAR

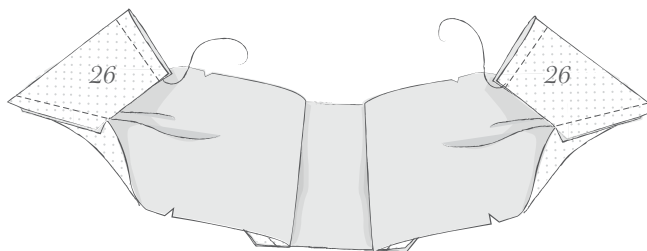
1. Pin interfaced Square Collar Front (24) to interfaced Square Collar Sides (25) as shown, matching notches. Stitch, pivoting at corners.



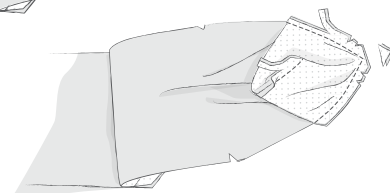
2. Pin Square Collar Sides to interfaced Square Collar Back (26) pieces, matching notches. Stitch.



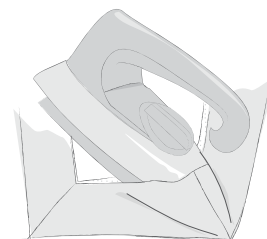
3. Fold Collar Back lengthwise, RS together, and pin along short ends at center back. Stitch.



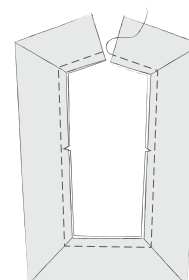
4. Trim as close as possible to all corners on stitched Square Collar, and trim the rest of stitched seam allowances to 1/4 in (6 mm).



5. Turn collar RS out, turning out corners. Using an iron to reach between layers, press mitered-corner seam allowances open.

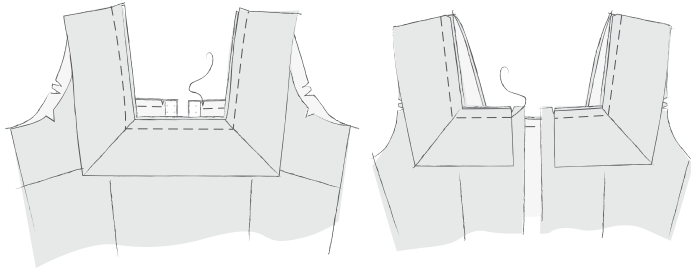


Fold collar along the rest of its sides, WS together and raw edges aligned. Press entire collar flat. Baste collar's raw edges together using a long machine stitch with a 1/2 in (1.3 cm) seam allowance.



Note: If using trim on collar, stitch trim on now (see p. 3).

6. Baste Square Collar to Square Neckline Bodice at the neckline, aligning collar to notches at center back.

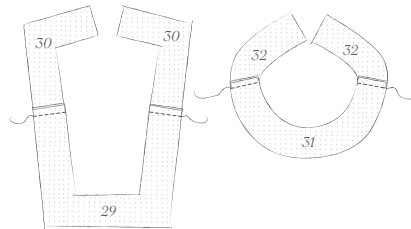


PREPARING FACING/BODICE LINING

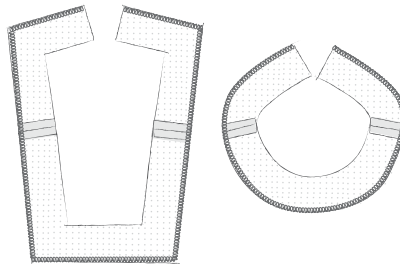
Choose either a neckline facing or full-bodice lining below.

NECKLINE FACING (FOR A DRESS WITH SLEEVES AND NO LINING):

1. Sew interfaced Neckline Facing Front to interfaced Neckline Facing Back (29 and 30 for square neckline, 31 and 32 for round neckline) at shoulder seams, RS together. Press seam allowances open.



2. Finish lower edge of facing unit by serging or other method of your choice.



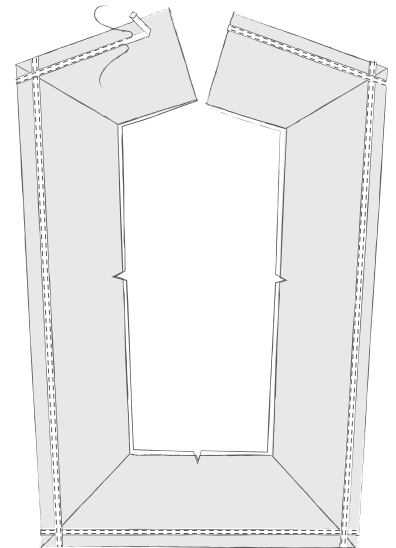
FINISHING NECKLINE

This is my clean-finish method that creates a tidy finish on the inside of the dress's neckline. The following instructions are illustrated with a neckline facing, but the methods are the same for a lining or an all-in-one-facing.

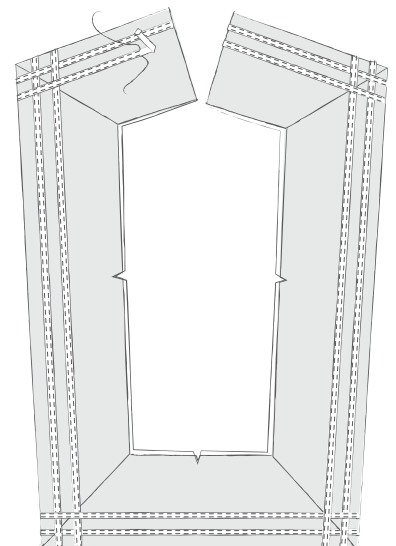
1. Prepare to attach facing/lining: Pin facing/lining to outer bodice along neckline, RS together. At zipper opening's top edge, fold seam allowances as follows, working with bodice back facing up and RS out: on the right half of opening (the underlap), fold both seam allowances to facing/lining WS 1/2 in (1.3 cm). The facing/lining seam allowance is nested inside the outer fabric seam allowance. On opening's left half (the overlap), fold facing/lining seam allowance to WS 7/8 in (2.2 cm). Fold outer fabric seam allowance to WS 5/8 in (1.5 cm). Seam allowances nest together, with facing/lining seam allowance 1/4 in (6 mm) wider. Folding seam allowances this way ensures facing/lining is finished neatly around lapped zipper at neckline.

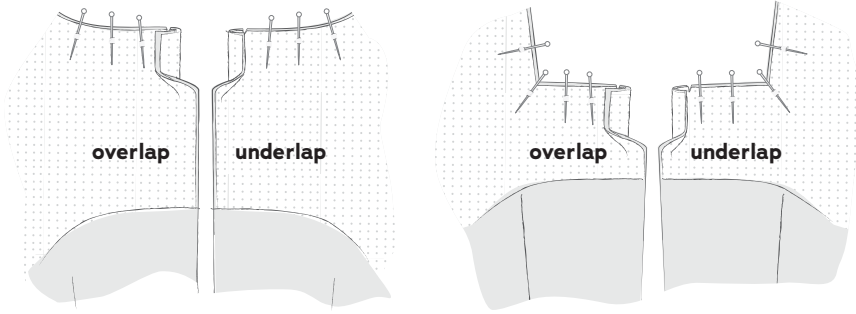
SAILOR TRIM

I love nautical elements on a dress, and the Square Collar is a great place to use white ribbon trim for a sailor-style collar. After constructing the collar, but before basting it to the bodice, pin and stitch ribbon trim to it. Place 1/4-in-wide (6-mm) grosgrain ribbon 1/2 in (1.3 cm) away from the folded edge of the collar, turning under the cut end of the ribbon. Edgestitch along the ribbon's edges.

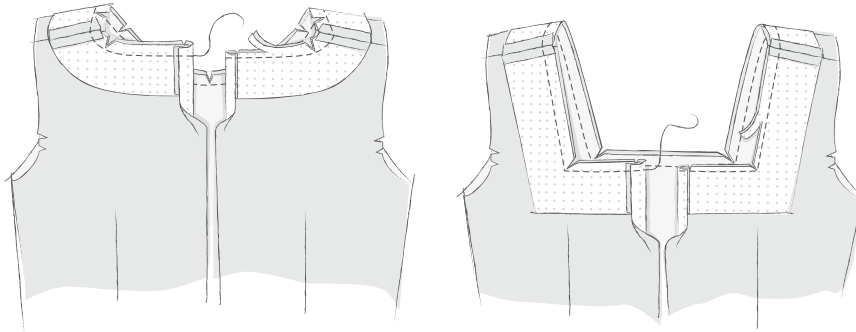


Place another row of ribbon 1/2 in away from the first, overlapping the ribbons at the collar's corners.

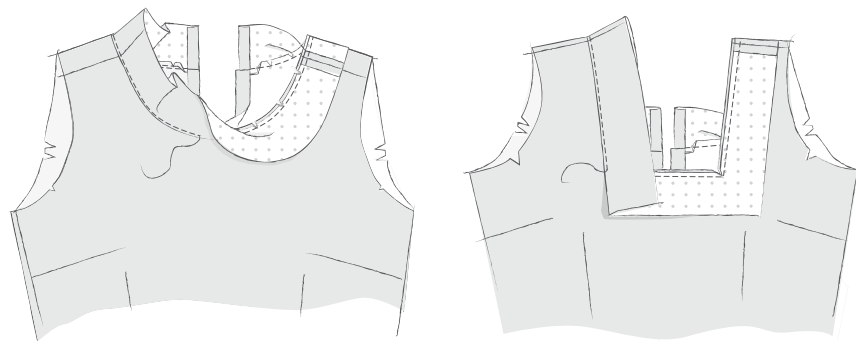




2. Sew facing/lining to outer bodice: Stitch around neckline, starting at one folded edge (pivoting at corners for square neckline only) and ending at the other folded edge. Grade seam allowances so that those on outer bodice are the widest and those on the facing/lining are narrower. (If there is a collar, trim its seam allowances to a width between bodice and facing/lining.) For square neckline, clip into corners. For round neckline, clip into curves every 1/2 in.



3. Understitch neckline: From RS, with facing/lining opened out from bodice and seam allowances underneath, stitch the facing/lining 1/8 in (3 mm) from seamline, catching seam allowances in stitching. Turn facing/lining to bodice WS and press neckline edge, rolling seamline inside.



PURCHASE THE FULL PATTERN

CHARMPATTERNS.COM

This is the most versatile dress pattern you'll ever own. This vintage-inspired design has two bodices, three skirts, six sleeve styles, and two collars, giving you 72 dress designs in one package. The "Choose Your Own Adventure" style of instructions lets you decide how you'll finish your dress—neckline facing, all-in-one facing, partial lining, or full lining. Be the heroine of your own sewing escapade!

- Includes 2 bodices, 2 collars, 6 sleeves, and 3 skirts for a total of 72 potential dresses!
- B to DD cup sizes
- Includes a 70-page instruction book
- Choose your own adventure with multiple finishing options
- PDF has 11 AO size sheets and 231 A4/Letter size sheets