

## [It's Sew Easy Series 1600 - Be a Sewing Superstar!](#)

Style Star Show#1601-2 Jumpsuit with Facings and Lacing



**Presented by: Joanne Banko**  
[www.letsgo sew.com](http://www.letsgo sew.com)

***Let's stay in touch!*** I'd love to help you make the most of ***your*** sewing machine!

[CLICK HERE](#) to add your name to the letsgo sew.com email list and receive timely tips, sewing news, free tutorials, and special updates. You'll be the first to know about new blog posts and my weekly preview of the online It's Sew Easy TV show.



This fashion forward jumpsuit features a laced front with small metal eyelets. It's a great look for many different occasions. Dress it up or down and enjoy the comfort of this one-piece garment made from Shannon Fabrics Sparkly [Metallic Embrace®](#). In this show you'll get tips for constructing a garment that looks good inside and out with facings that don't flop and are interfaced properly. See how to add a special touch with eyelets too!

*Are you ready? Let's go sew!*

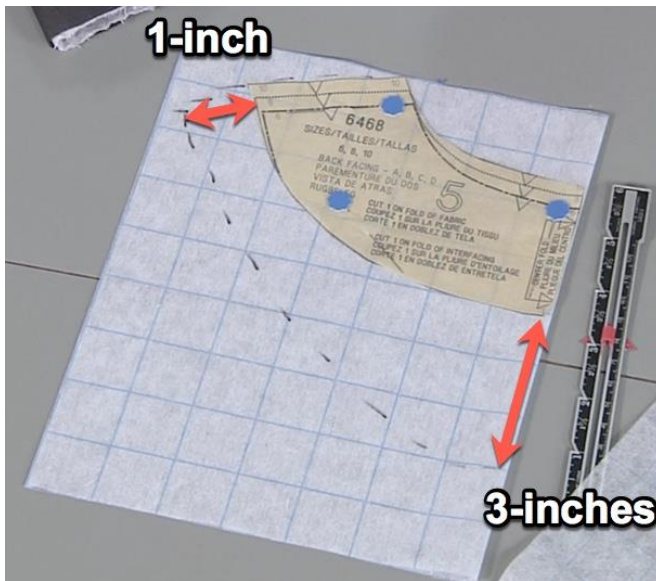
### **Materials and supplies featured in this segment:**

- Featured machine is the [Brother XV8550D Dream Machine2](#).
- Shannon Fabrics generously provided the Sparkly [Metallic Embrace®](#) for this garment. (Fabric is Starry Night Metallic Embrace® Cobalt/Silver). [CLICK HERE](#) for a free Let's Go Sew Tip sheet to learn more about sewing with this double gauze fabric.
- Light to medium weight sew-in interfacing works best for the featured facing technique. **Note:** Soft fusible interfacing such as fusible tricot can be used as an alternative option. Be sure to press fabric lightly after sewing to keep from crushing crinkled texture of fabric.

- Dritz® [Eyelet Pliers](#) and Dritz® 5/32" [Eyelets](#)
- Consider using rattail satin cording as a substitute for lacing made from self-fabric.
- Featured pattern is New Look #6468.
- Pattern tracing cloth for creating upgraded facing patterns.

**Featured Facing Technique:**

1. Create a new facing piece for the back neck by adding 1-inch at the shoulder and 3-inches at the bottom.



Re-shape lines and cut a new facing piece. Add 1-inch to the shoulder of the front facing piece so it matches the back and continue the addition all along the outer edge of the facing.

2. Cut fashion fabric and matching interfacing pieces using these new wider facing patterns.
3. Sew shoulder seams of facing and interfacing.



4. Pin outside edges of pieces with right sides together.



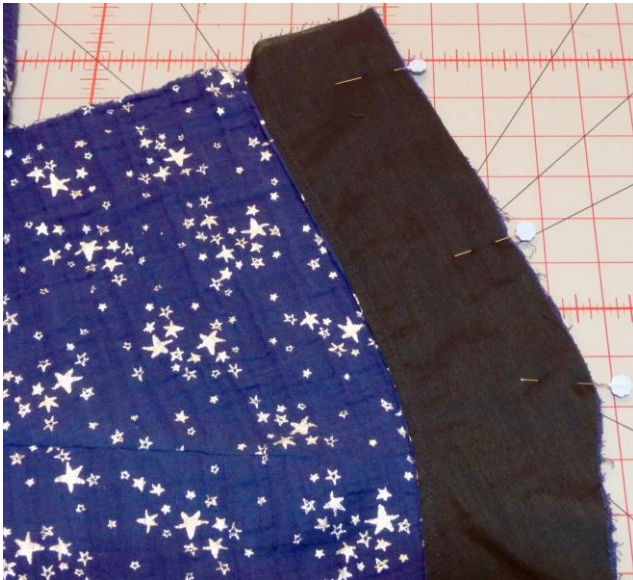
5. Sew a 1/4-inch seam along the outer edge. Turn right side out and lightly press the edge.



6. Topstitch along finished edge to keep layers together.



7. Pin facing to neckline and sew as directed in pattern instructions.



#### **Tips for adding Eyelets:**

Carefully mark position of each eyelet. Cut a small circle of additional interfacing to use on the wrong side of each eyelet position. Follow instructions included with eyelet tool to punch hole and then insert eyelet.

**Note:** You can easily substitute eyelets on patterns that call for buttons and loops. Simply add eyelets on each side of the opening, spacing them evenly on the right and left side of opening.



Questions? Comments? I invite you to visit me at my Sewing and Embroidery website [www.letsdosew.com](http://www.letsdosew.com). You'll find online lessons, videos, free downloads, and lots of sewing and embroidery information and inspiration!

Find me on [Facebook](#) and [YouTube](#)

Be sure to visit the [Official Brother Blog](#) to read my posts on a wide variety of sewing and embroidery topics.

Happy Sewing!

*Joanne*