

[It's Sew Easy TV Series 1300](#)

Style Tip

Create a two-tone double welt pocket, perfect for travel totes and garments too!

The **Pivot Function** found on many Brother machines makes turning corners and topstitching an easy task!



Presented by: Joanne Banko

www.letsdosew.com

Learn to make an attractive two-tone pocket by following the steps shown here. In this short style segment I showed how using the Pivot Function allows you to keep both hands on your work as you sew. The following special machine functions will help you precisely sew this pocket style.

- Engage the Pivot Function and the presser foot will go up slightly each time you pause during sewing.
- Set needle to the down position so you can easily maneuver the fabric without losing your place.
- Select auto tie off and the machine will automatically raise the foot to its highest position when you touch the button to tie off and finish stitching.

Materials and Supplies featured in this episode

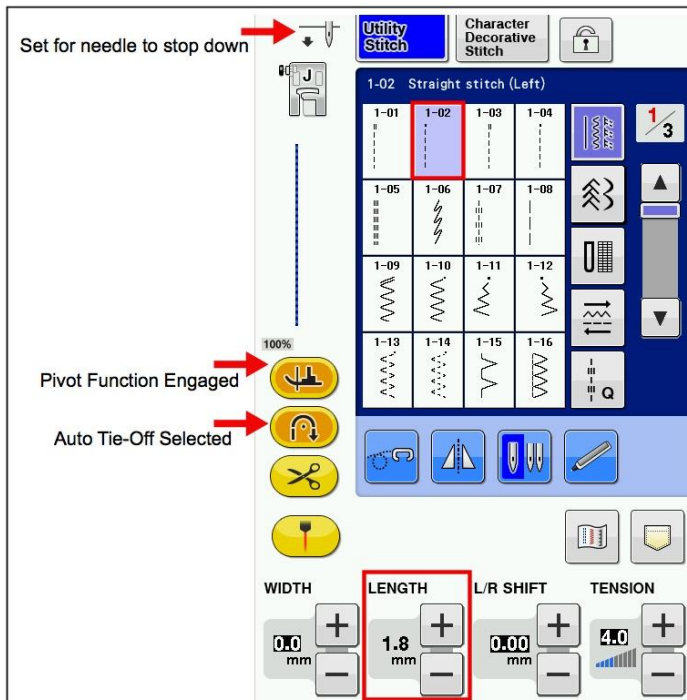
- [Brother Sewing Machine with Pivot function capability](#)
- [Open Toe Presser Foot](#) for topstitching pocket. (Designed primarily for decorative stitching, this clear or metal foot is optional but helpful for greater visibility).
- [Coats Dual Duty XP](#) to match fabric
- Basic sewing supplies, including a wash out or removable marker, and a Schmetz Jeans Needle or Microtex Needle (size 12) for pocket construction and topstitching.
- Fabric: Light to medium weight woven fabrics are recommended for this pocket style. Pocket is fashioned using a simple folded method to form the pocket welts. Thick fabrics are too bulky. Cottons, linens, and lightweight wools are an ideal choice. They press well and provide a crisp, neat look for the finished pocket. Select contrasting fabric or choose two fabrics in the *same* color family for a subtle look. Be sure fabrics are colorfast and compatible for laundering.

Cutting Instructions:

- For the **welt piece**, cut one strip of contrast fabric measuring 3-inches wide by 7-inches long. Stabilize the entire piece with lightweight fusible interfacing.
- For **pocket lining**, cut one strip of contrast fabric measuring 7-inches wide by 12-inches long.

Machine Set Up:

- Set up the machine for ordinary sewing using a straight stitch. Set stitch length to 1.8mm. Use thread that matches fabric color for construction. You can use contrast thread and a 2.5 to 3.0 stitch length for all topstitching. Switch to the open toe foot when topstitching for better visibility. Engage the Pivot Function by touching the on-screen icon. **Note:** Check your machine manual for settings. Screens and settings vary from machine to machine. See example of settings below:



Tip: You can turn the Pivot Feature on and off when ever you want to. There are times when I want the presser foot to stay in contact with the fabric. Other times it is helpful when the presser foot goes up each time I pause sewing.

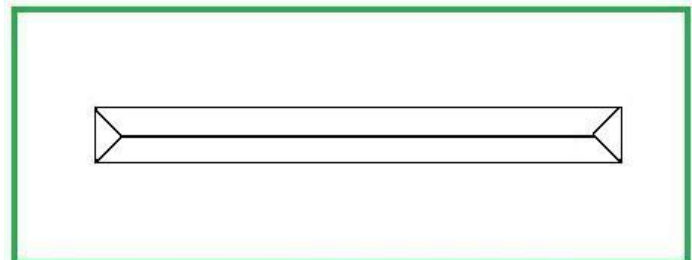
Depending on your machine remember that you can also raise the presser foot with the presser foot lever, the command button, and my favorite option - **the knee lifter!** It pays to know your options and then experiment with whatever works best for you at any given time.

Steps for Creating Pocket:

- Begin by drawing a horizontal line on the right side of the fabric to mark the location of the pocket opening. Select the welt piece. Draw a box measuring ½-inch wide by 5-inches long on the wrong side of welt piece.

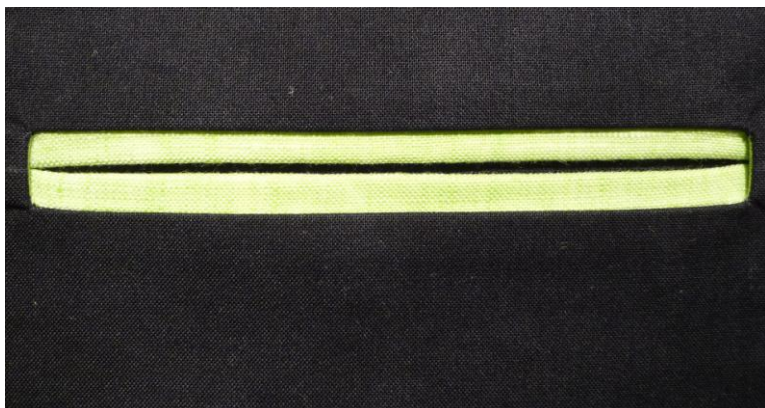


- Center welt piece over the horizontal line on fashion fabric, having right sides together. Sew around the box, stitching corners twice for re-enforcement. Cut through the center of the box, stopping ½-inch before you reach the ends. Carefully clip diagonally up to each of the four corners. See below:



3. Turn welt to the wrong side of the fabric piece. Next, flip fabric so that right side faces you. Working from the right side, form the welts, folding and pressing $\frac{1}{4}$ inch of each long edge to the center of the opening. Press carefully from right and wrong side of fabric.

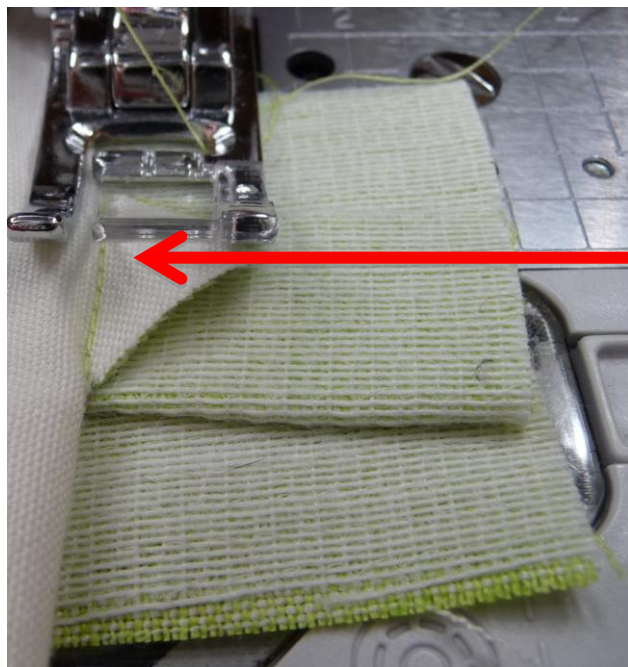
Right Side



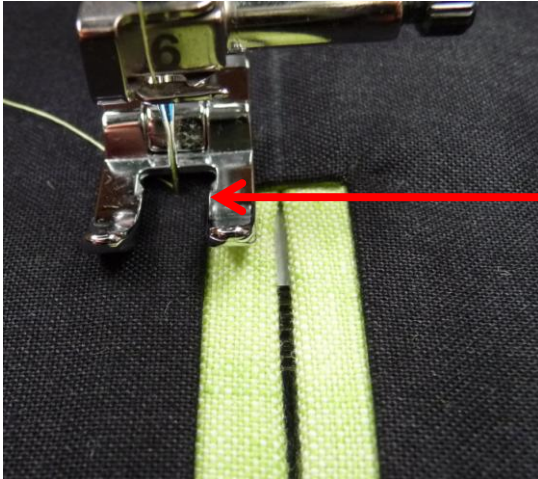
Wrong Side



4. Stitch welts in place by sewing from end to end along each of the corner points, smoothing fashion fabric out of the way to avoid stitching through it.



5. Engage the Pivot Function. Select an ordinary straight stitch with a center needle position. Place the open toe foot on the machine and topstitch along lower welt from right side, using the inside edge of the Presser foot toe as a guide.



6. Place the regular sewing foot back on the machine. Attach pocket lining to the lower portion of the welt piece, matching short edges, having right sides together, and using a 1/4-inch seam allowance. Press seam toward the bottom of the pocket lining.



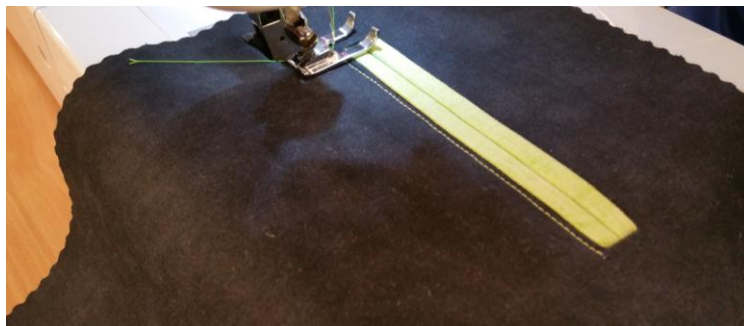
7. Next, fold the pocket lining up to the top edge of the welt. Sew pocket side seams using a 1/2-inch seam allowance.



8. Clean finish raw edges of all exposed seam allowances using a zigzag or overcasting stitch.



9. Place open toe foot back on the machine. Topstitch the welt from right side, matching up with previous topstitching as you stitch, and using the Pivot Function to maneuver precisely around each corner. See below:



Stand back and admire your work!

Additional Resources:

- Visit the Brother web site at www.brother-usa.com for Free embroidery designs, project instructions, and tutorials. Be sure to visit the [Official Brother Blog](#) for even more great ideas and information!
- Visit your local [Brother sewing machine dealer](#) for Brother Machines, Brother software programs, and special machine accessories to help you create custom items.
- I invite you to visit me at my Sewing and Embroidery website, www.letsdosew.com for more tips, lessons, & free downloads. I would love to hear your thoughts, comments, and answer any questions you may have.
- [CLICK HERE](#) to find me on Facebook.

Happy Sewing!

