



MAKE IT PERSONAL

Personalized Travel Pillow

Instructions by Donna Babylon

You'll Need:

- 2, 18-inch squares fleece in color of your choice
- 5-inch square of woven fusible interfacing (such as Pellon Shape-Flex)
- Pre-fused laser cut fabric letter (order from www.SayItWithApplique.com)
- Good quality fiber-fil
- Sewing thread to match pillow fabric
- Embroidery thread to match fabric letter
- Iron
- Straight Pins
- Fabric scissors

www.SayItWithApplique.com

Say it with
Appliqué
Peel. Press. Stitch.

MAKE IT PERSONAL

Personalized Travel Pillow

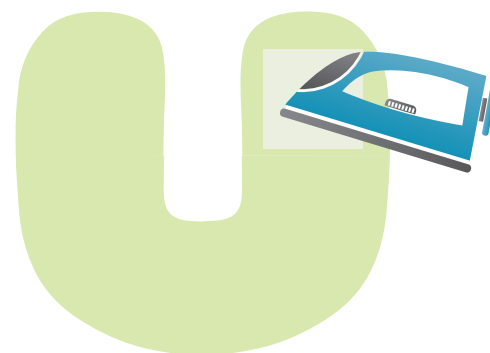
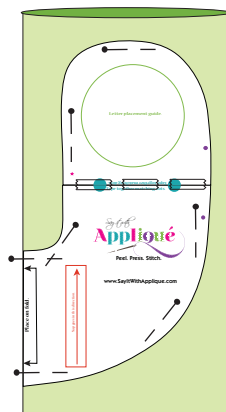
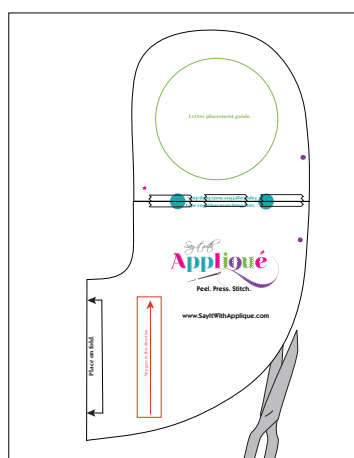


www.SayItWithApplique.com

page 2

Note: The pattern pieces for the neck pillow are included in this download. Order individual precut fabric letters from www.SayItWithApplique.com (the fusible has already been applied to the back!). The letter style we used on this project is called the "Large Fancy Cap." The letters are available in many delicious colors.

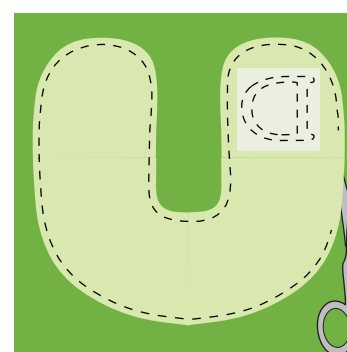
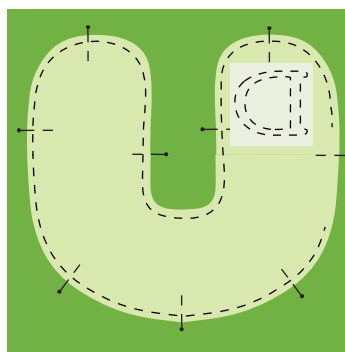
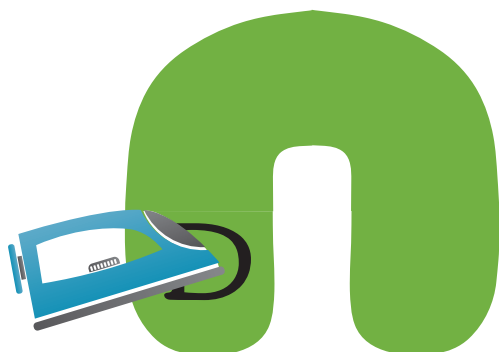
Determine the nap direction by gently rubbing your hand over the right side of your fleece. Refer to the red arrow on the pattern piece to arrange the pattern on the fabric with the nap.



1 Tape the pattern pieces together; match the blue dots. Carefully cut out pattern along outside black line.

2 Fold the fleece in half so it measures 9" x 18" (note the direction of the nap). Pin the pattern to the fabric with the marked edge against the fold of the fabric. Cut out one pillow shape.

3 Refer to the pattern to determine the placement of fabric letter. On the wrong side of the fleece, press the interfacing in place. If you place the interfacing as shown in illustration, the letter will be on *your* right side as you are wearing it (see photo).



4 On the right side of the travel pillow, remove the paper backing from the letter and fuse in place over the interfacing using a dry, hot iron for 3 to 5 seconds. Stitch around the edge of the letter using either a straight, zigzag, satin, or blanket stitch.

5 Pin the cut shape of the neck pillow right sides together with remaining fleece square. Using a straight stitch and $\frac{1}{2}$ " seam allowance, stitch around the edge of the pillow through all layers. Leave an opening along one side for turning (refer to the purple dots on pattern for guide).

6 Cut the remaining pillow shape from the fabric. Cut small notches in the seam allowance around the curves for a smooth finish when turned. Turn the pillow right side out. Stuff to the desired fullness and hand stitch opening closed.

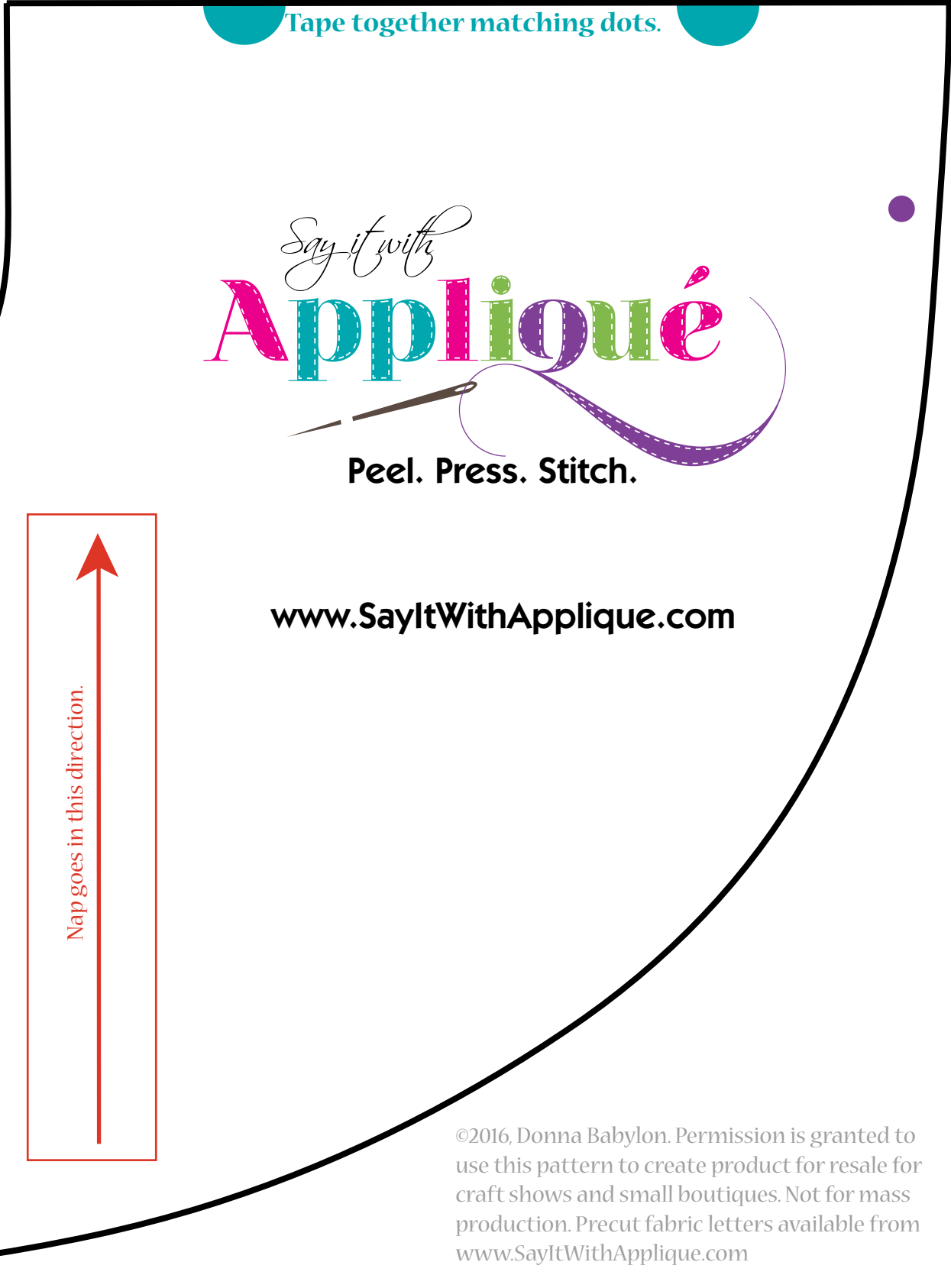
Key:

Cut on black solid lines.

Leave open between the two purple dots for turning.

Double stitch around the neck from pink star to pink star.

Place fabric letter or monogram in center of green circle.



Tape together matching dots.



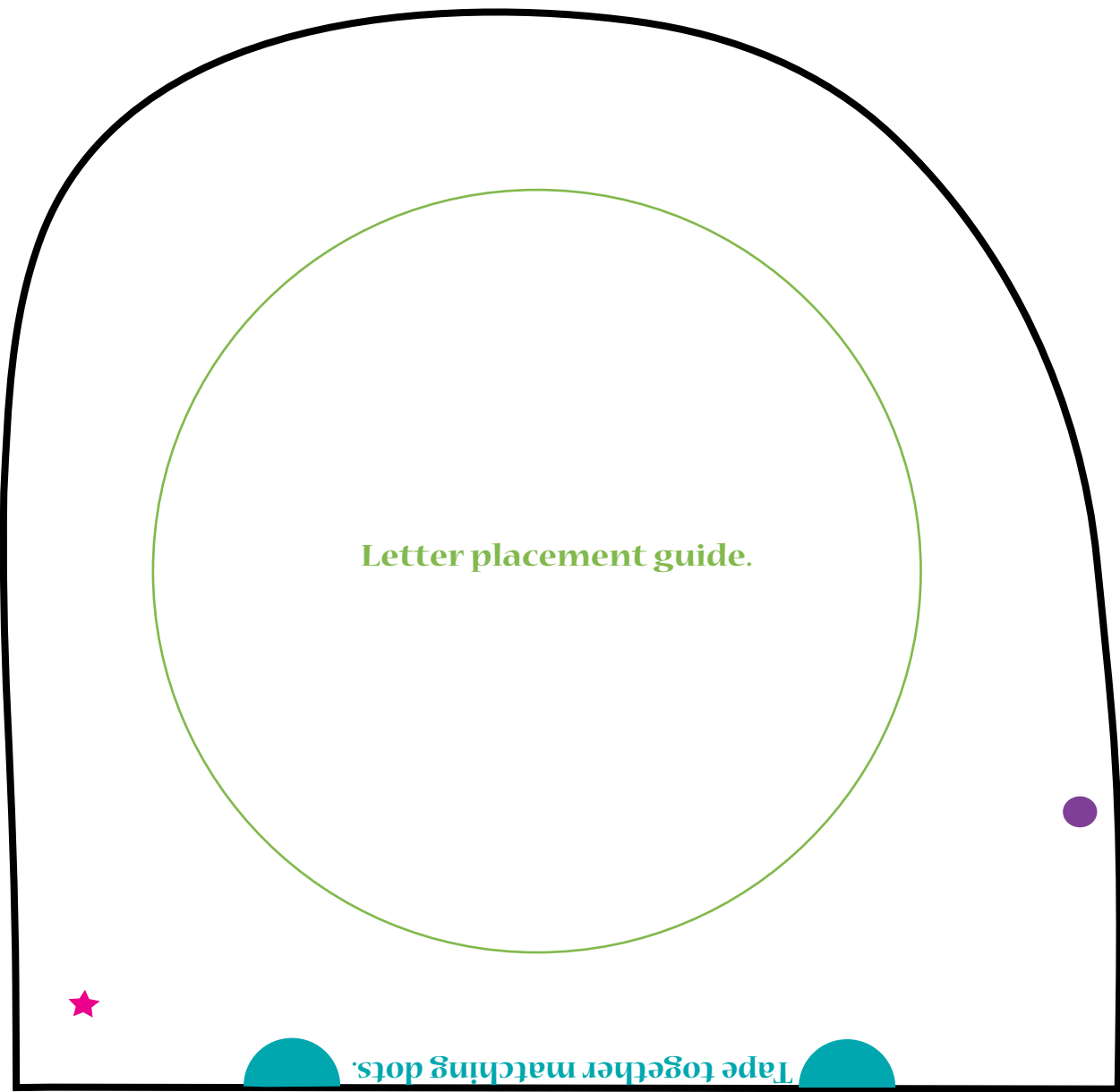
Peel. Press. Stitch.

www.SayItWithApplique.com


Place on fold.

Nap goes in this direction.

©2016, Donna Babylon. Permission is granted to use this pattern to create product for resale for craft shows and small boutiques. Not for mass production. Precut fabric letters available from www.SayItWithApplique.com



Key:

Cut on black solid lines. 

Leave open between the two purple dots for turning.

Double stitch around the neck from pink star to pink star.

Place fabric letter or monogram in center of green circle.

©2016, Donna Babylon. Permission is granted to use this pattern to create product for resale for craft shows and small boutiques. Not for mass production. Precut fabric letters available from www.SayItWithApplique.com